

News and Events at the Parlin Field Airport, Newport, New Hampshire December 2009

South 300 feet of Runway 18/36 Closed



Pilots familiar with Parlin Field know the south 600 feet of runway 18/36 develops some pretty impressive frost heaves through the winter months. In an effort to reduce frost heaves, we are not plowing

the south 300 feet of the runway – the area south of the displaced threshold. The remainder of the runway from the displaced threshold to the north end of the runway will be plowed as usual. The experiment will test a theory that snow on the pavement will provide enough insulation to significantly reduce the development of frost heaves. That means, of course, the south 300 feet of runway 18/36 is closed and that snowbanks may exist at the displaced threshold. [NOTAMs](#) provide runway closure and snowbank information.

Winter Operations

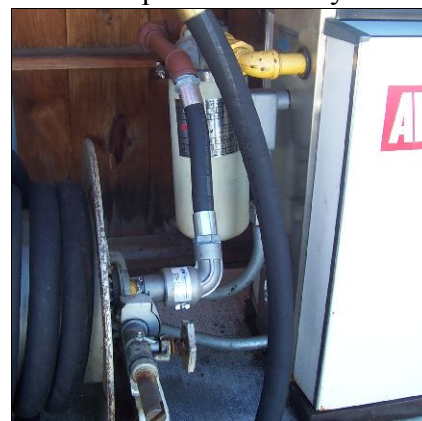
The Town of Newport highway crew plows the runway and taxiways after the town roads have had at least a first plowing. Many times, plowing the airport occurs at night. The town is responsible for the runway, main ramp, and taxiways. Lease holders are responsible for areas adjacent to their hangars.

We try to limit height of snowbanks and keep the snow pushed back on runways and taxiways to accommodate low-wing aircraft. Patchy ice may be present anytime due to melting and re-freezing. We also try to keep [NOTAMs](#) up-to-date, but delays in posting NOTAMs may occur. Point your web browser to the Parlin Field [webcam](#) for a snapshot of ramp conditions.

If you notice any hazardous conditions or problems with wintertime maintenance, please contact the airport manager.

Self-Serve Fueling Emergencies

Recently, the hose reel swivel failed and dumped a few ounces of fuel on the pavement. Fortunately, the swivel failed during a routine inspection. The system was shut down and pilots were without fuel for a few days until the faulty swivel could be replaced. It could have been worse. The swivel could have failed under pressure while fueling an aircraft, spraying fuel all over people, airplanes, and the fuel shelter. Although



extremely unlikely, hoses and pipes can break or the fuel nozzle can jam open. If for any reason you experience uncontrolled fuel flow, shut the pump off. If you can't get to the pump lever, hit the red emergency shutoff button on the side of the operations building. Call for help, and if possible use the spill kit in the fuel shelter to contain the spill.

Aviation Fuel Tax Legislation

House Bill 1506 directs existing aviation revenue from fuel taxes, aircraft registration, and other aviation sources into an aeronautical fund for the purpose of funding maintenance projects at public use airports. The bill is currently in the legislative system and will be heard by the Ways and Means Committee sometime in early 2010. Details about the bill are on the State of New Hampshire General Court [website](#).

Passage of HB1506 is critical for Parlin Field because it could provide 80/20 grant money for runway

reconstruction – a project estimated to cost well in excess of \$1,000,000. Benefits to the Town of Newport are obvious. However, passage of the bill is also important to Newbury, Sunapee, New London, Grantham, and other surrounding towns because many residents and visitors to those towns benefit, either directly or indirectly, from the aeronautical facilities at Parlin Field.

Parlin Hangar Restoration Fund

Initial fund raising for the Parlin Field Hangar Restoration Project is underway. To date, more than \$7,250 has been donated by 40 groups and individuals. This is a good start to reach the goal of \$35,000 needed to fully restore the historic structure. Donations may be made to the “Town of Newport – Parlin Field” and mailed to the airport manager at the contact address shown below.

Paper or Plastic?

Is your pilot certificate paper or plastic? If you have one of new plastic certificates with the FAA hologram



on the front and pictures of Wilbur and Orville on the back, you're all set. However, if your certificate is still the old paper style you need to take action soon! According to 14 CFR 61.19(h), the holder of a paper certificate may not exercise privileges of that certificate after March 31, 2010. To retain your pilot privileges, you must obtain a

new plastic certificate from the FAA. Visit the [FAA](#)

[website](#) for more information.

Upcoming Events

- Dec 15** Airport Advisory Board meeting. 6:30 PM. Operations Building.
- Jan 6** Chill & Grill. 6:00 PM. Lil' Red Baron. Sponsored by Recycled Pilots, LLC.
- Jan 19** Airport Advisory Board meeting. 6:30 PM. Operations Building.
- Jan 20** Chill & Grill. 6:00 PM. Lil' Red Baron. Sponsored by Recycled Pilots, LLC.
- Feb 12- 14** Airport CLOSED for Winter Carnival events. Check [NOTAMS](#) for exact dates and times.
- Apr 17** National Aviation Safety Stand Down.
- Jul 10** Comanche Fly-In. Rain date Jul 11.

About Parlin Field

The Parlin Field airport is owned and operated by the Town of Newport, New Hampshire. It is a community airport that enjoys support from pilots, tenants, stakeholders, and the community at large. It does not receive Federal funds.

Contact Information

Russ Kelsea, Airport Manager

Town of Newport

15 Sunapee Street

Newport, NH 03773

Parlin Field: 603-863-1220

Home: 603-664-7650

Mobile: 402-943-6884

Email: parlinfield@newportnh.net