

SCALE: 1"=5'

WCR-61 NOTES

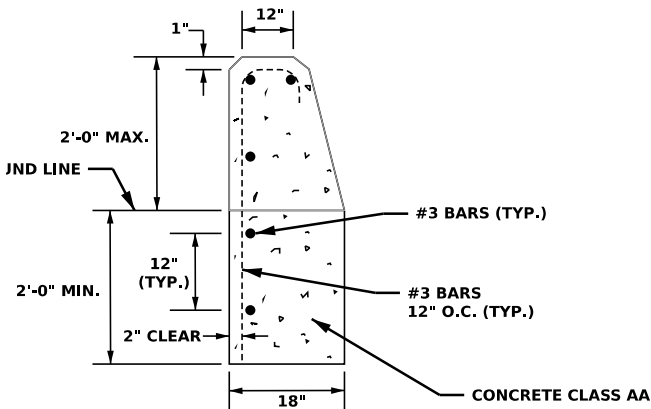
1. SAWCUT, REMOVE AND DISPOSE OF EXISTING CONCRETE STAIRS WITHIN PROPOSED RAMP FOOTPRINT.
2. CROSSWALKS SHALL REMAIN CLOSED TO PEDESTRIANS UNTIL ACCEPTANCE BY THE ENGINEER.
3. RAMPS SHALL BE LAID OUT IN THE FIELD PRIOR TO CONSTRUCTION TO ENSURE ADA COMPLIANCE.
4. SEE NEXT SHEET FOR CONCRETE BACKWALL DETAIL.

STATE OF NEW HAMPSHIRE

DEPARTMENT OF TRANSPORTATION BUREAU OF HIGHWAY DESIGN

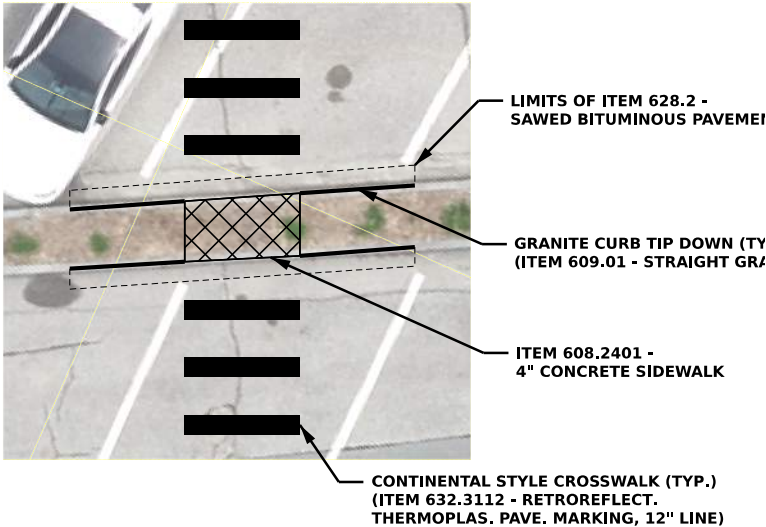
NEWPORT NH ROUTE 10/11/103 (21206B) SPECIAL RAMP DETAILS (1 OF 2)

MODEL	DGN	STATE PROJECT NO.	SHEET NO.	SHEET TOTAL
SPEC-1	21206wcrdet	43060B	22	39



WCR-61 REINFORCED CONCRETE BACKWALL DETAIL

NOT TO SCALE

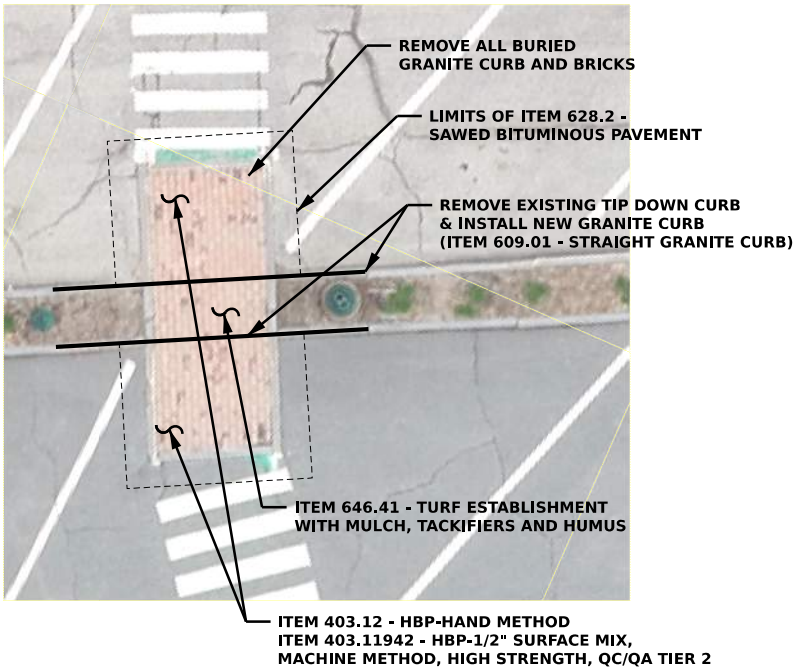


PROP. MEDIAN CUT THROUGH

SCALE: 1"=10'

DETAIL NOTES

1. REMOVE WCR-21/22 & WCR-24/25 IN THEIR ENTIRETY AND INSTALL LANDSCAPED MEDIAN ISLAND PER THE ABOVE DETAIL.
2. REMOVAL OF BRICKS, GRANITE CURB, AND ASPHALT SHALL BE PAID FOR UNDER ITEM 203.1.
3. CURB SHALL BE REMOVED AND RESET ELSEWHERE ON THE PROJECT AS DIRECTED BY THE ENGINEER.
4. INSTALLATION OF VERTICAL GRANITE CURB, CONCRETE SIDEWALK, LANDSCAPING AND HMA SHALL BE PAID FOR UNDER THE STANDARD BID ITEMS.



WCR-21/22 & WCR-24/25 REMOVAL

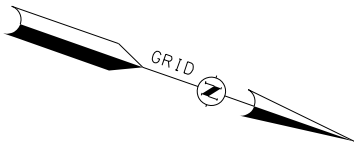
SCALE: 1"=10'

STATE OF NEW HAMPSHIRE				
DEPARTMENT OF TRANSPORTATION BUREAU OF HIGHWAY DESIGN				
NEWPORT NH ROUTE 10/11/103 (21206B) SPECIAL RAMP DETAILS (2 OF 2)				
MODEL	DGN	STATE PROJECT NO.	SHEET NO.	SHEET TOTAL
SPEC-2	21206wcrdet	43060B	23	39

DRAFT

BEGIN CONSTRUCTION

STA 700+00



PAVEMENT MARKING NOTES

1. ALL SYMBOLS, WORDS, TRANSVERSE MARKINGS (STOP BARS, CROSSWALK LINES, AND RAILROAD SYMBOLS), LANE LINES AND ALL OTHER MARKINGS NOTED WITH (T) SHALL BE THERMOPLASTIC.
2. CONTACT THE BUREAU OF TRAFFIC (BOT-PM-NOTIFICATION@DOT.NH.GOV) AT LEAST TWO WEEKS IN ADVANCE OF FINAL PAVEMENT MARKING OPERATIONS FOR BOT TO REVIEW THE CONTRACTOR'S COMPLETED LAYOUT, INCLUDING ALL PASSING ZONES.
3. REPLACE WORDS/SYMBOLS PER LATEST NHDOT STANDARD PLAN SHEETS.
4. PAVEMENT MARKINGS SHALL EXTEND BEYOND PROJECT PAVING LIMITS TO OVERLAP EXISTING MARKINGS DISTURBED BY CONSTRUCTION.
5. REFER TO NHDOT STANDARD PLAN PM-15 'PEDESTRIAN CROSSINGS' FOR CONTINENTAL CROSSWALK DETAIL FOR ALL CONTINENTAL STYLE CROSSWALKS.

ON-STREET PARKING NOTES

1. ALL ON-STREET PARKING SHALL FOLLOW MUTCD STANDARD. NO PARKING SPACES SHALL BE PERMITTED WITHIN 20' OF A CROSSWALK OR... SIDEROAD NOR WITHIN 15' OF A FIRE HYDRANT.
2. ANGLED PARKING STALLS SHALL BE 9'X18.5.
3. PARALLEL PARKING STALLS SHALL BY 8'X22'. END SPACES MAY BE 8'X20'.
4. ANGLED PARKING SHALL BE 60 DEGREES UNLESS OTHERWISE NOTED.
5. ALL PARKING SPACE LINES AND BUFFER ZONES SHALL BE 4" SSLW

LIMIT OF WORK
STA 803+32

LIMIT OF WORK
STA 707+97

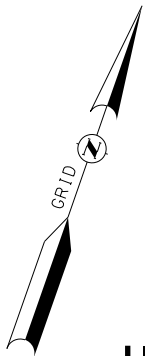
MATCH TO PAVEMENT MARKING PLAN SHEET 2 OF 4



GPI Greenman-Pedersen, Inc.
Engineering | Design | Planning | Construction Management
116 South River Rd, Bldg. B, Suite 1, Bedford, NH 03110
Tel: (603) 766-8259 www.gpinet.com

STATE OF NEW HAMPSHIRE			
DEPARTMENT OF TRANSPORTATION • BUREAU OF HIGHWAY DESIGN			
NEWPORT			
NH ROUTE 10/11/103 (21206B)			
PAVEMENT MARKING PLAN (SHEET 1 OF 4)			
DGN	STATE PROJECT NO.	SHEET NO.	TOTAL SHEETS
21206Bpvmplan	43060B	33	39

DRAFT



LIMIT OF WORK
STA 820+51

LIMIT OF WORK
STA 818+63

MATCH TO PAVEMENT MARKING PLAN SHEET 3 OF 4

ON-STREET PARKING NOTES

1. ALL ON-STREET PARKING SHALL FOLLOW MUTCD STANDARD. NO PARKING SPACES SHALL BE PERMITTED WITHIN 20' OF A CROSSWALK OR SIDEROAD NOR WITHIN 15' OF A FIRE HYDRANT.
2. ANGLED PARKING STALLS SHALL BE 9'X18.5.
3. PARALLEL PARKING STALLS SHALL BY 8'X22'. END SPACES MAY BE 8'X20'.
4. ANGLED PARKING SHALL BE 60 DEGREES UNLESS OTHERWISE NOTED.
5. ALL PARKING SPACE LINES AND BUFFER ZONES SHALL BE 4" SSLW

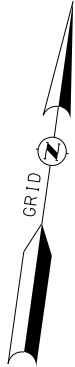
MATCH TO PAVEMENT MARKING PLAN SHEET 1 OF 4



GPI Greenman-Pedersen, Inc.
Engineering | Design | Planning | Construction Management
116 South River Rd. Bldg. B, Suite 1, Bedford, NH 03110
Tel: (603) 766-8259 www.gpinet.com

STATE OF NEW HAMPSHIRE			
DEPARTMENT OF TRANSPORTATION • BUREAU OF HIGHWAY DESIGN			
NEWPORT			
NH ROUTE 10/11/103 (21206B)			
PAVEMENT MARKING PLAN (SHEET 2 OF 4)			
DGN	STATE PROJECT NO.	SHEET NO.	TOTAL SHEETS
21206Bpvmplan	43060B	34	39

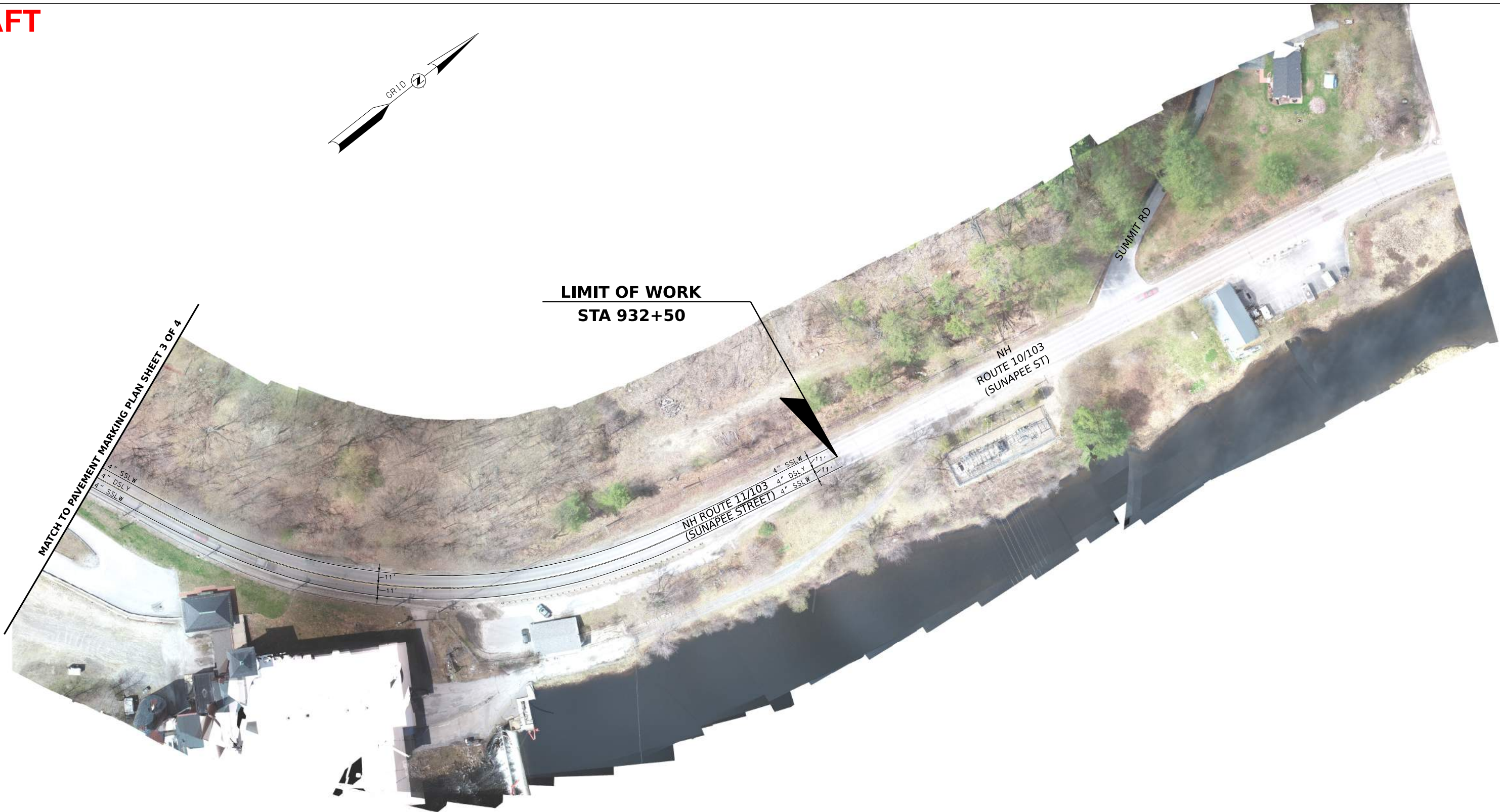
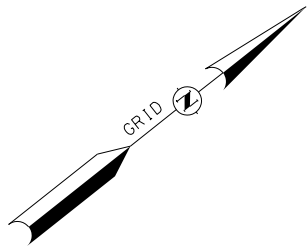
DRAFT



GPI Greenman-Pedersen, Inc.
Engineering | Design | Planning | Construction Management
116 South River Rd, Bldg. B, Suite 1, Bedford, NH 03110
Tel: (603) 766-8259 www.gpinet.com

STATE OF NEW HAMPSHIRE			
DEPARTMENT OF TRANSPORTATION • BUREAU OF HIGHWAY DESIGN			
NEWPORT			
NH ROUTE 10/11/103 (21206B)			
PAVEMENT MARKING PLAN (SHEET 3 OF 4)			
DGN	STATE PROJECT NO.	SHEET NO.	TOTAL SHEETS
21206Bpvmplan	43060B	35	39

DRAFT



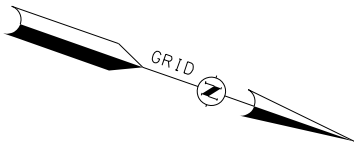
GPI Greenman-Pedersen, Inc.
Engineering | Design | Planning | Construction Management
116 South River Rd, Bldg. B, Suite 1, Bedford, NH 03110
Tel: (603) 766-8259 www.gpinet.com

STATE OF NEW HAMPSHIRE			
DEPARTMENT OF TRANSPORTATION • BUREAU OF HIGHWAY DESIGN			
NEWPORT			
NH ROUTE 10/11/103 (21206B)			
PAVEMENT MARKING PLAN (SHEET 4 OF 4)			
DGN	STATE PROJECT NO.	SHEET NO.	TOTAL SHEETS
21206Bpvmplan	43060B	36	39

DRAFT

BEGIN CONSTRUCTION

STA 700+00



GPI Greenman-Pedersen, Inc.
Engineering | Design | Planning | Construction Management
116 South River Rd, Bldg. B, Suite 1, Bedford, NH 03110
Tel: (603) 766-8259 www.gpinet.com

STATE OF NEW HAMPSHIRE			
DEPARTMENT OF TRANSPORTATION • BUREAU OF HIGHWAY DESIGN			
NEWPORT			
NH ROUTE 10/11/103 (21206B)			
CURB RAMP LOCATION PLANS (SHEET 1 OF 3)			
DGN	STATE PROJECT NO.	SHEET NO.	TOTAL SHEETS
21206Bwcr locations	43060B	37	39

DRAFT



- NOTES:
- 1. WCR-20 CONSISTS OF A BITUMINOUS FILLET ENTIRELY WITHIN THE PAVEMENT AREA. REMOVAL OF THIS RAMP SHALL BE SUBSIDIARY TO ITEM 417. NO OTHER WORK IS REQUIRED FOR THIS LOCATION.
 - 2. WCR-23 SHALL BE DECONSTRUCTED AND REPLACED WITH A NHDOT STANDARD CONCRETE PEDESTRIAN CURB RAMP FOR THE NEW CROSSING LOCATION. BRICK SIDEWALK WORK SHALL BE PAID FOR UNDER ITEM 608.411.

GPI Greenman-Pedersen, Inc.
Engineering | Design | Planning | Construction Management
116 South River Rd, Bldg. B, Suite 1, Bedford, NH 03110
Tel: (603) 766-8259 www.gpinet.com

STATE OF NEW HAMPSHIRE			
DEPARTMENT OF TRANSPORTATION • BUREAU OF HIGHWAY DESIGN			
NEWPORT			
NH ROUTE 10/11/103 (21206B)			
CURB RAMP LOCATION PLANS (SHEET 2 OF 3)			
DGN	STATE PROJECT NO.	SHEET NO.	TOTAL SHEETS
21206Bwcr locations	43060B	38	39

DRAFT



GPI Greenman-Pedersen, Inc.
Engineering | Design | Planning | Construction Management
116 South River Rd, Bldg. B, Suite 1, Bedford, NH 03110
Tel: (603) 766-8259 www.gpinet.com

STATE OF NEW HAMPSHIRE			
DEPARTMENT OF TRANSPORTATION • BUREAU OF HIGHWAY DESIGN			
NEWPORT			
NH ROUTE 10/11/103 (21206B)			
CURB RAMP LOCATION PLANS (SHEET 3 OF 3)			
DGN	STATE PROJECT NO.	SHEET NO.	TOTAL SHEETS
21206Bwcr locations	43060B	39	39