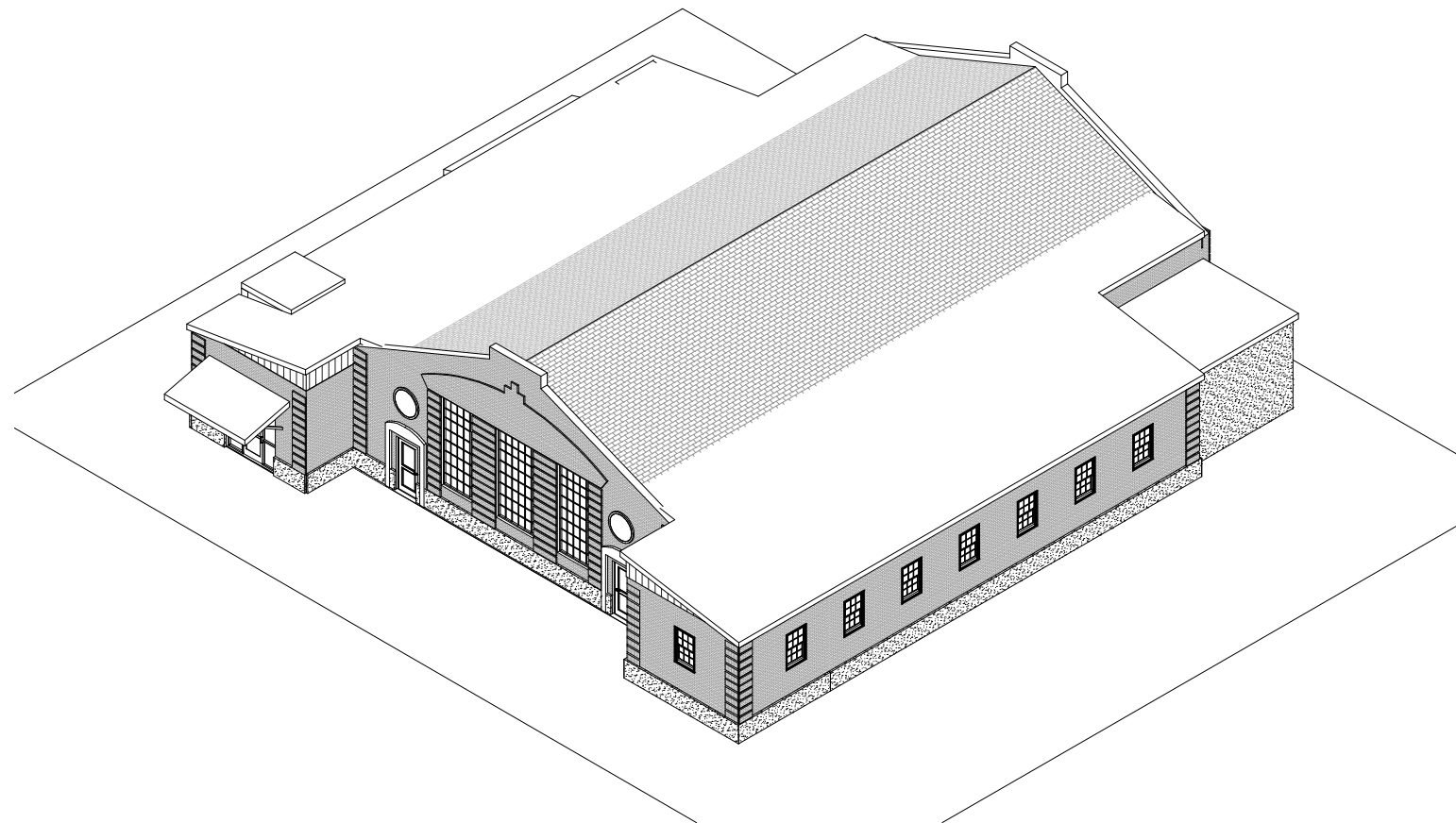
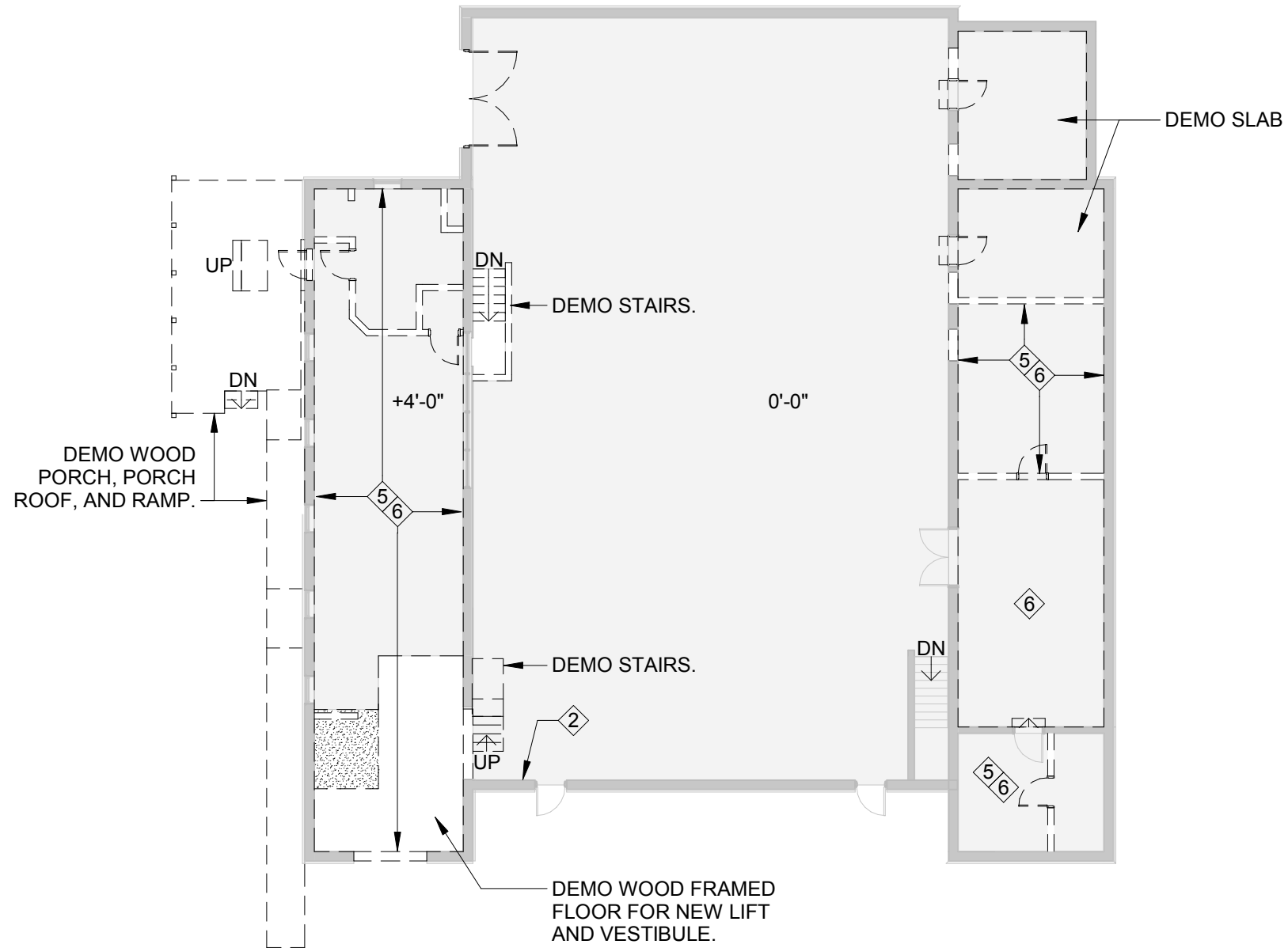


NEWPORT RECREATION PLANNING STUDY

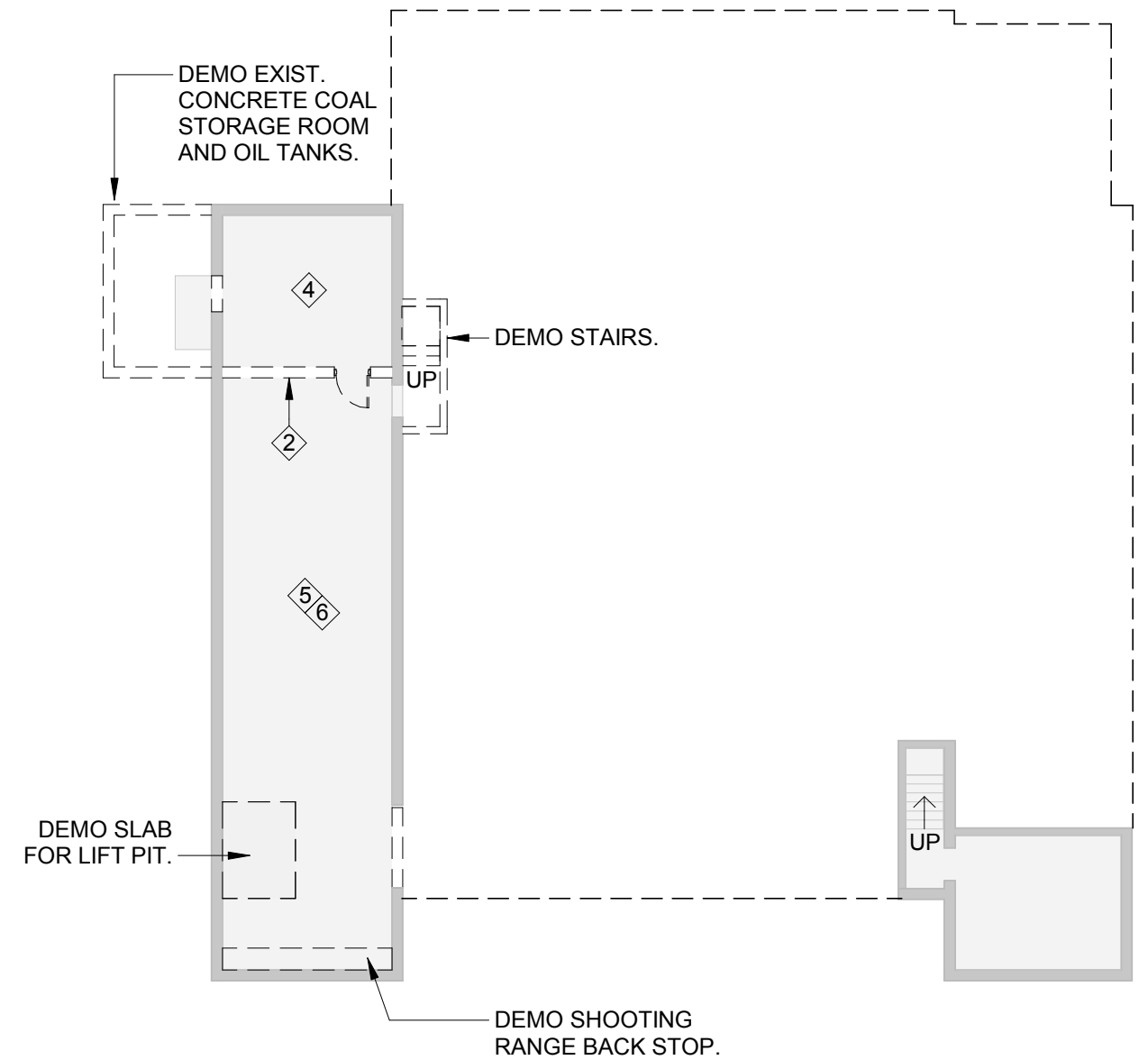
NEWPORT, NH



- PD-1 Demo First Floor and Basement
- PD-2 First Floor & Basement Plan
- PD-3 Roof Plan
- PD-4 Demo and Finish Notes
- PD-5 Exterior Elevation
- PD-7 Building Section
- PD-8 Window Elevations
- PD-9 Door Schedule
- PD-10 Finish Schedule

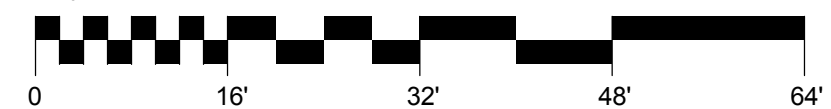


1 Ground Floor (1st Floor)
A-4.1|PD-1 1/16" = 1'-0"
 SEE PD-4 FOR DEMOLITION NOTES

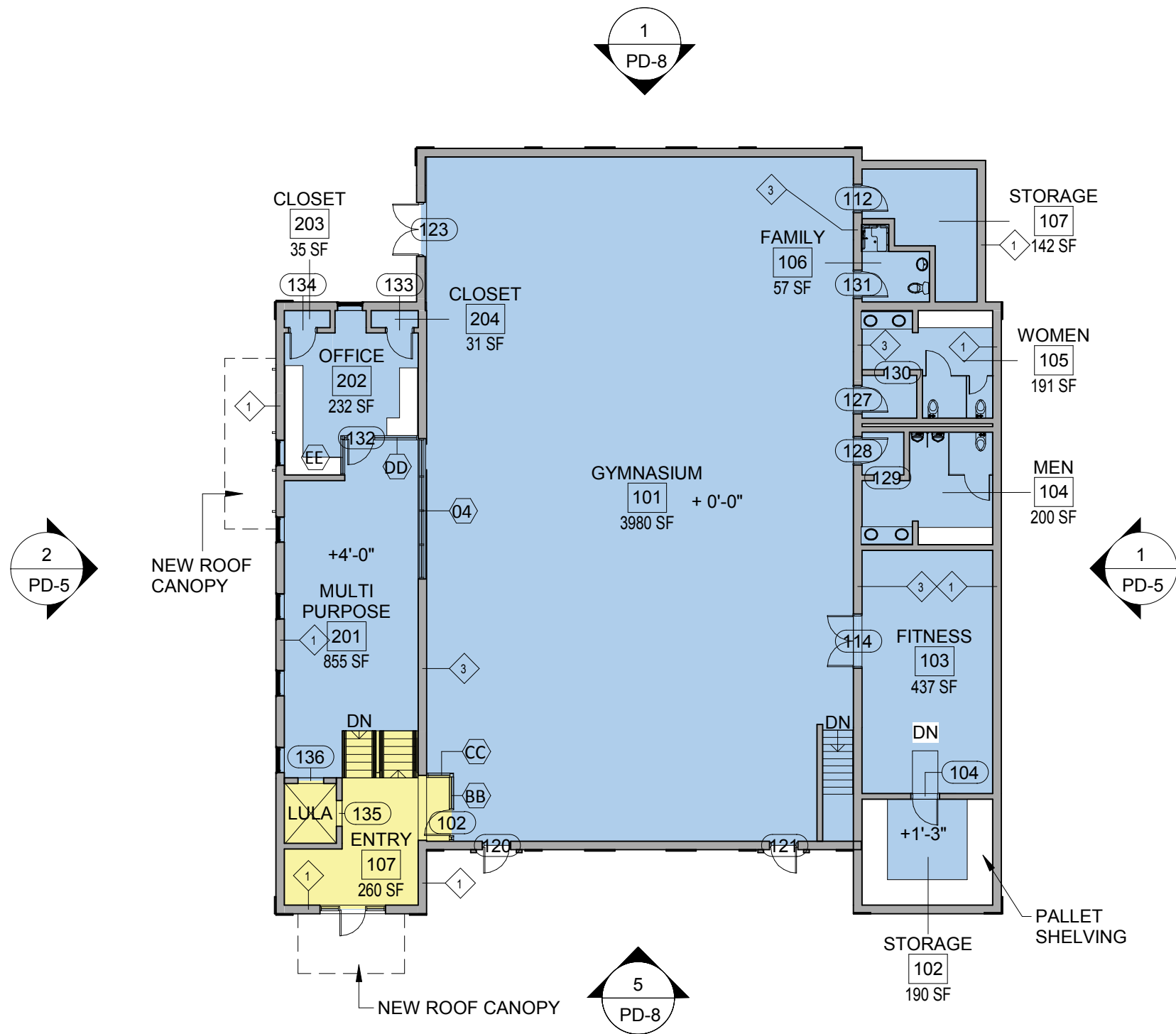


2 1st Sub Floor
A-4.1|PD-1 1/16" = 1'-0"
 SEE PD-4 FOR DEMOLITION NOTES

Graphic Scale: 1 inch = 16 feet

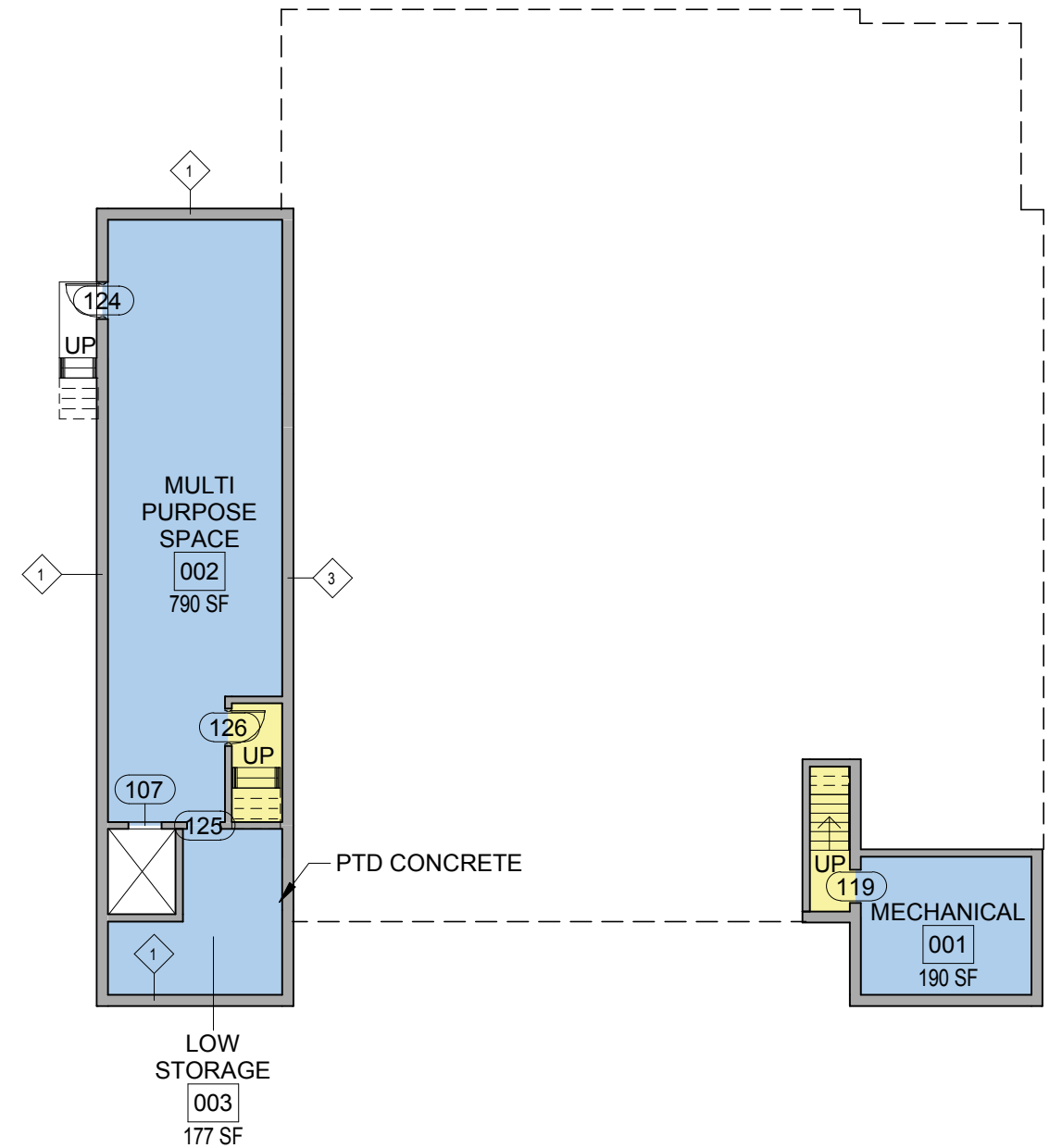


PROJECT
NORTH



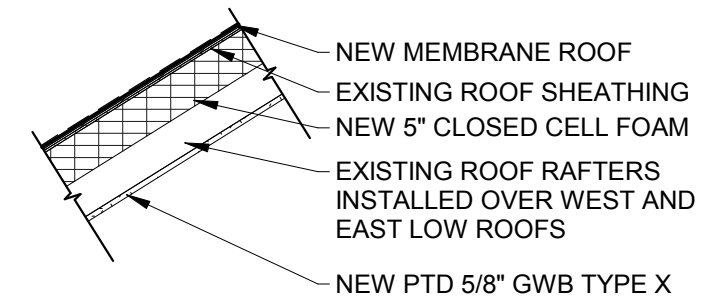
1 Ground Floor (1st Floor)
A-4.1/PD-2 1/16" = 1'-0"

SEE PD-4 FOR PARTITION AND FINISH NOTES

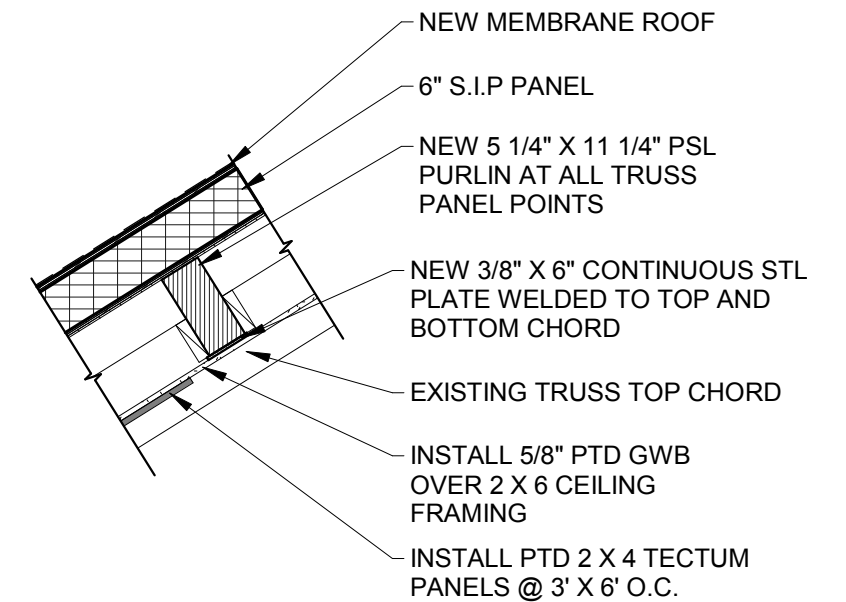


2 1st Sub Floor
A-4.1/PD-2 1/16" = 1'-0"

SEE PD-4 FOR PARTITION AND FINISH NOTES

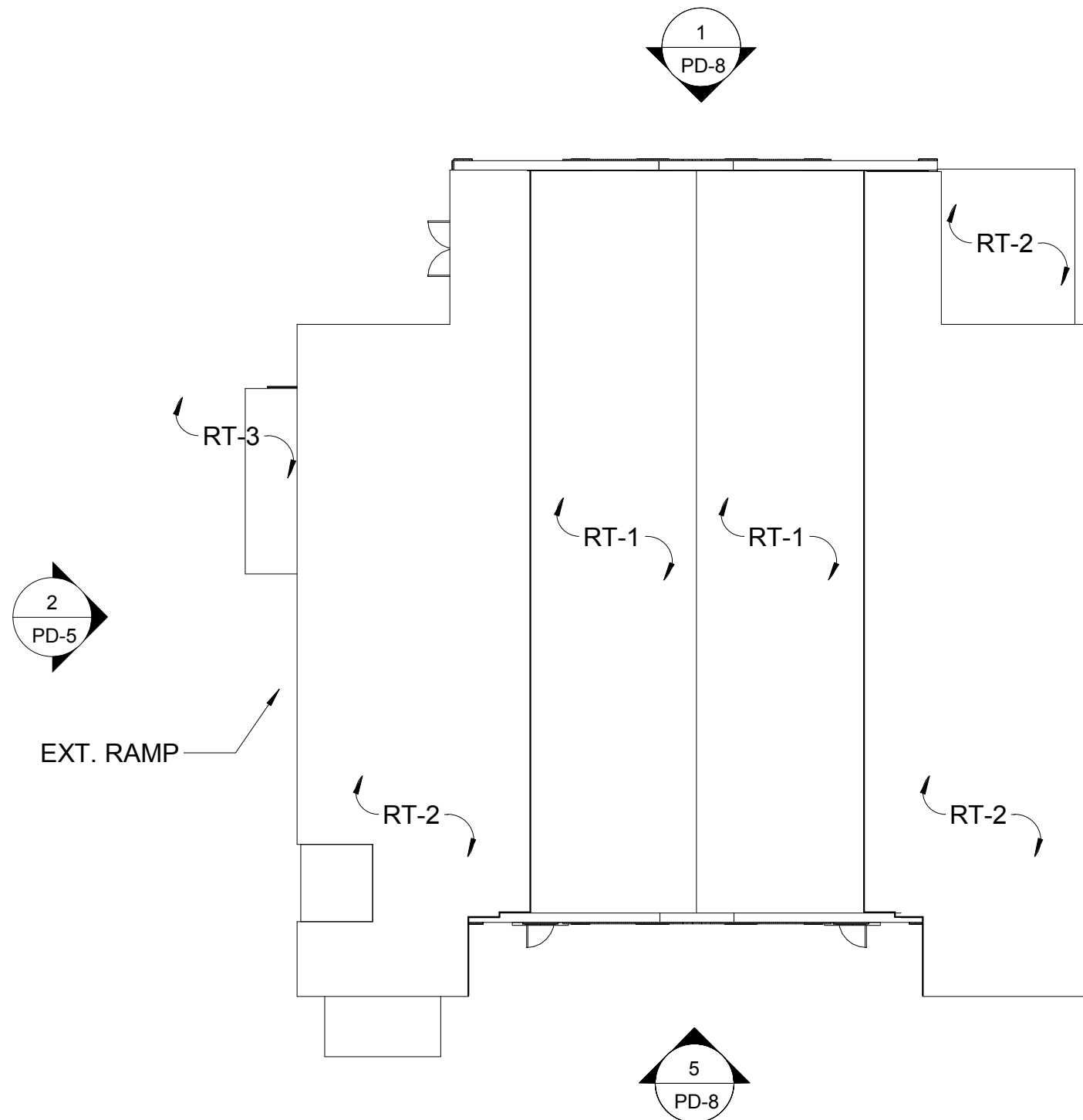


2 Roof Detail 2
PD-3 1/2" = 1'-0"

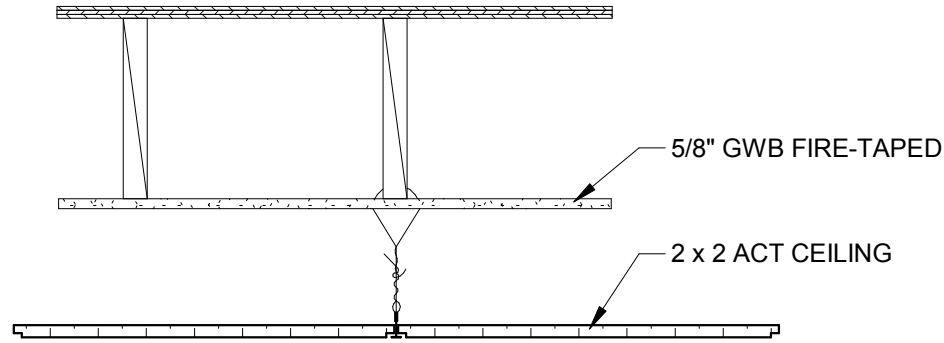


DETAIL PER OPTION 1B IN NEWPORT REC ROOF ASSESSMENT REPORT, 2010, FOR ESTIMATING PURPOSES

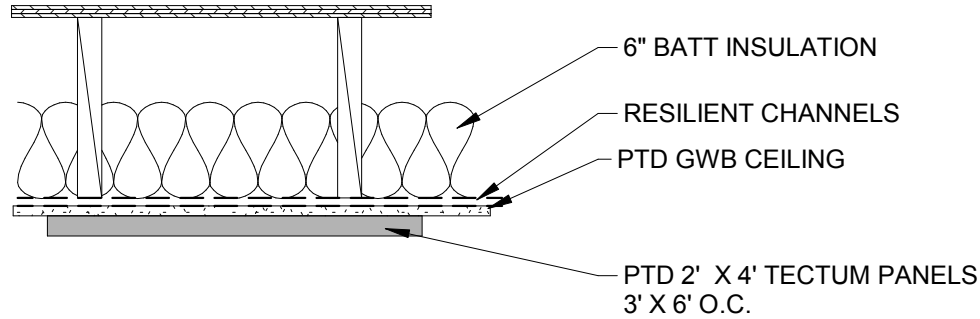
3 Roof Detail 1
PD-3 1/2" = 1'-0"



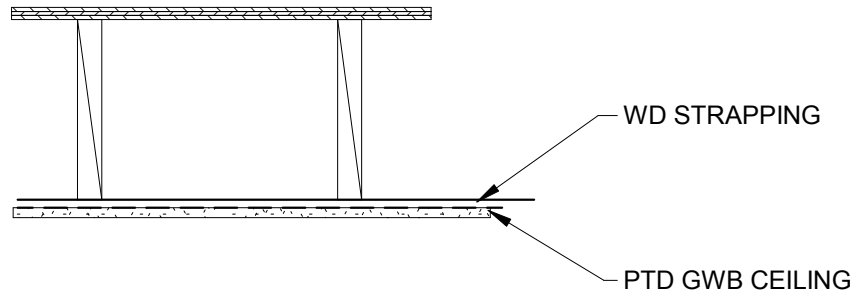
1 Roof Plan
A-4.1 PD-3 1/16" = 1'-0"



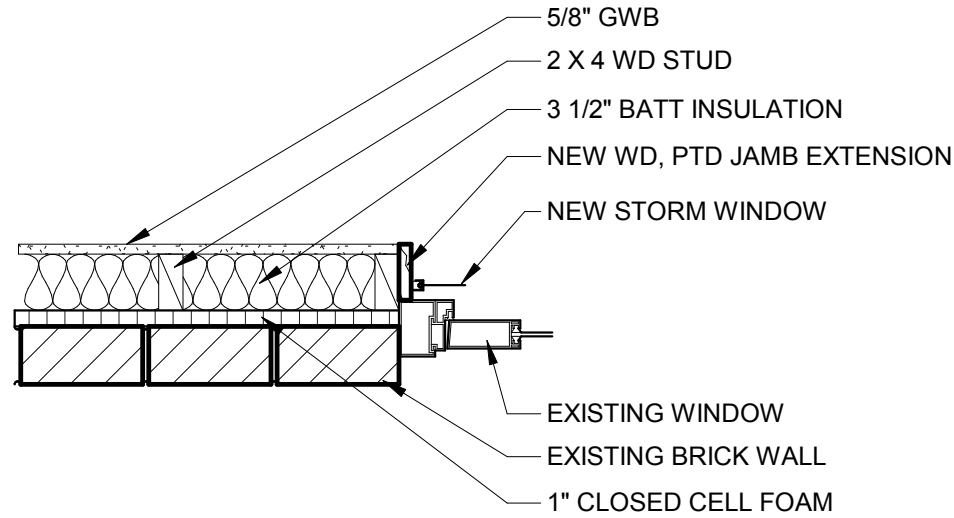
2 Ceiling Type 1
 PD-4 1" = 1'-0"



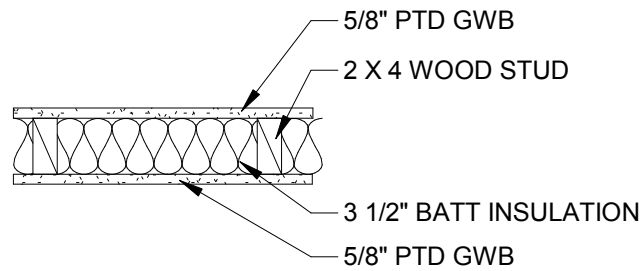
3 Ceiling Type 2
 PD-4 1" = 1'-0"



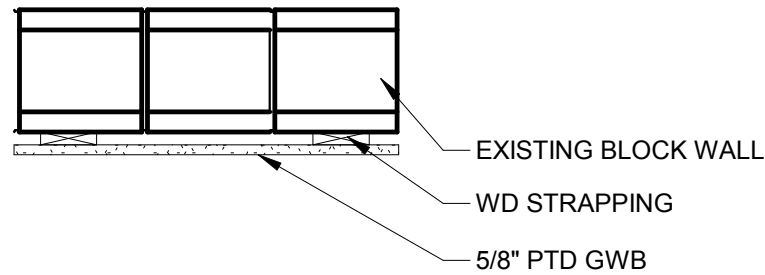
4 Ceiling Type 3
 PD-4 1" = 1'-0"



5 Wall Type 1
 PD-4 1" = 1'-0"



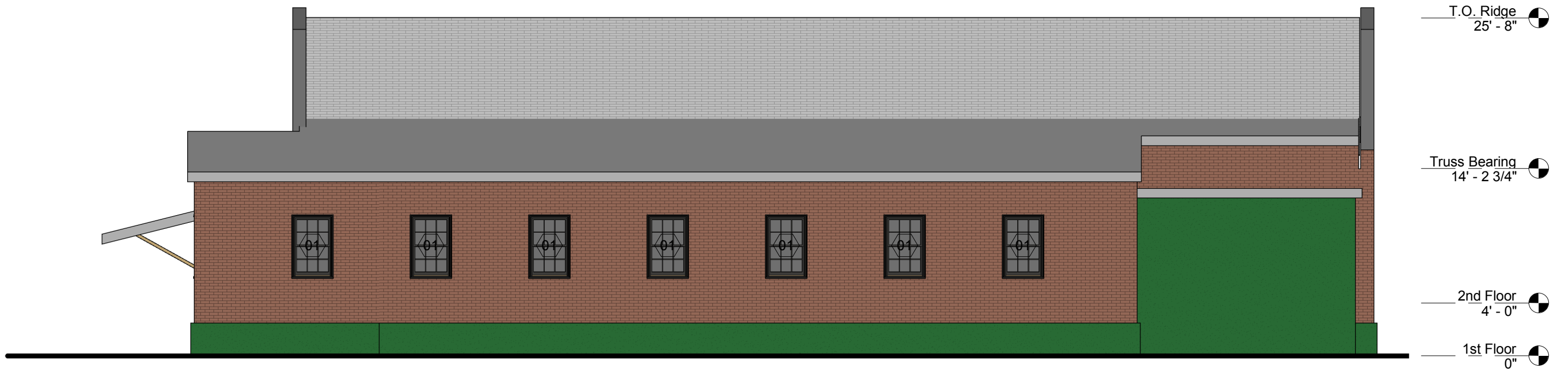
6 Wall Type 2
 PD-4 1" = 1'-0"



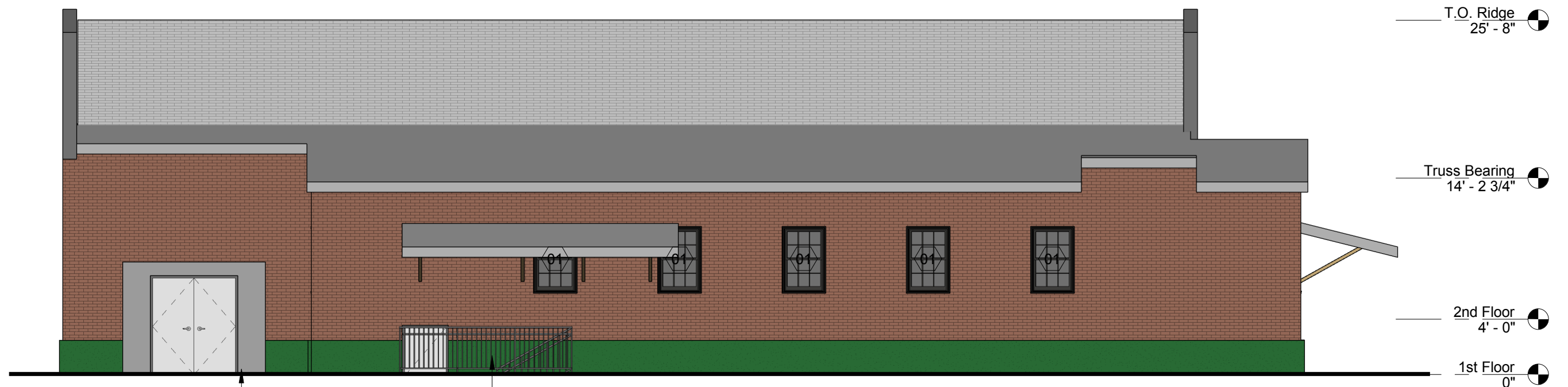
7 Wall Type 3
 PD-4 1" = 1'-0"

DEMO NOTES:

- ① DEMO ALL FLOOR FINISHES, INCLUDING BASKETBALL FLOOR.
- ② DEMO ALL ELECTRICAL SERVICE PANELS, DISTRIBUTION, AND LIGHTING.
- ③ DEMO ALL PLUMBING FIXTURES, AND PIPING.
- ④ DEMO FURNACE, TANKS, RADIATORS, AND PIPING.
- ⑤ DEMO ALL PLASTER WALL FINISHES AND STUDS.
- ⑥ DEMO ALL CEILINGS AND INSULATION.



1 East Elevation
PD-2/PD-5 1/8" = 1'-0"



2 West Elevation
PD-2/PD-5 1/8" = 1'-0"

NEW SIDING AND DOOR
TO REPLACE EXISTING

NEW ROOF, EXIT STAIRS,
AND GUARD RAIL

Graphic Scale: 1 inch = 8 feet



PD-5

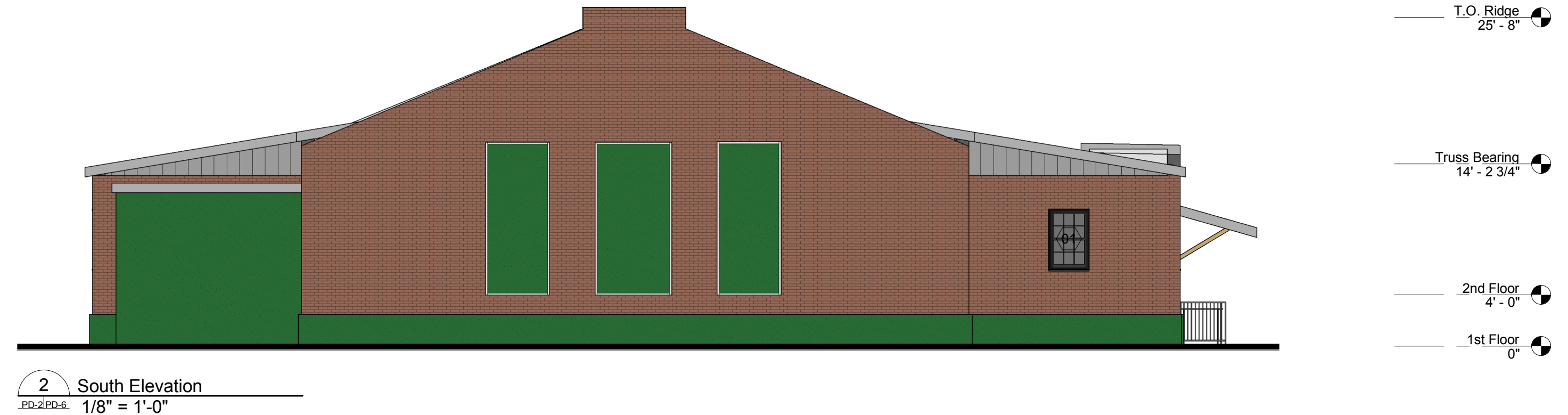
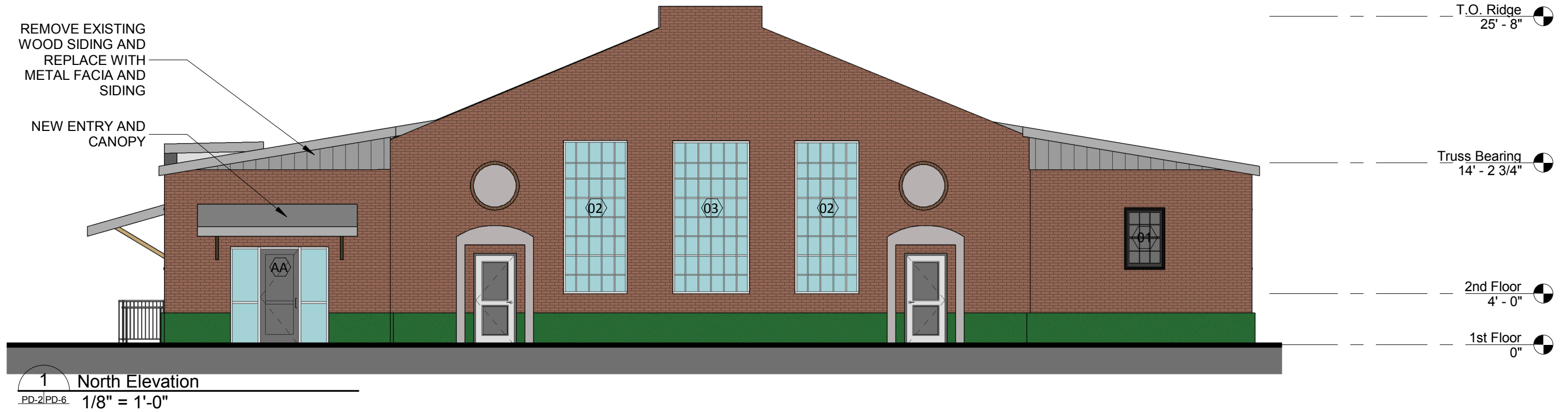
Exterior Elevation

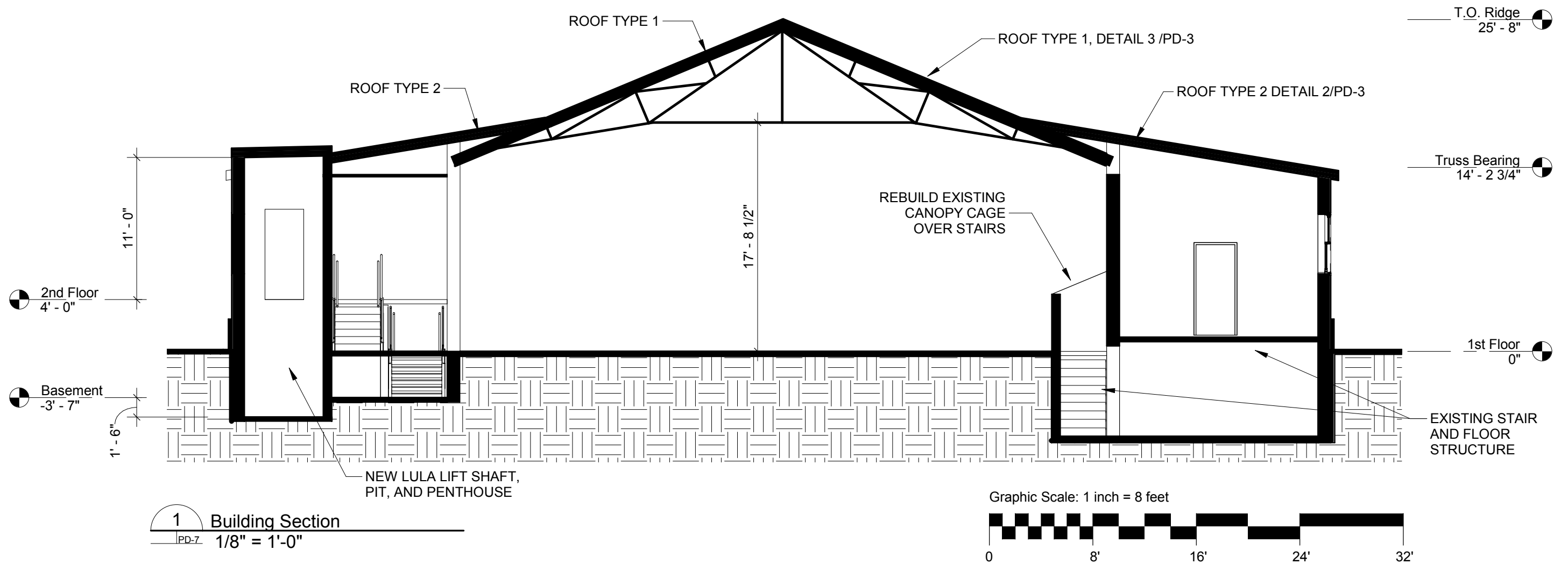
Newport Recreation Planning Study

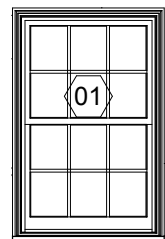
Planning Study
© 2019, Bread Loaf Corporation

1/8" = 1'-0"
11/08/19

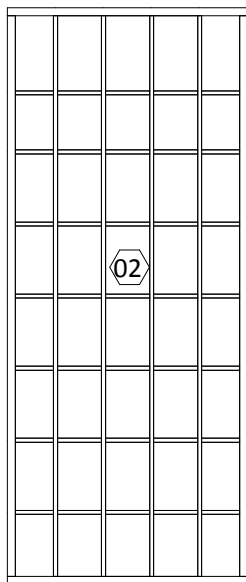
BreadLoaf
Architects
Planners
Builders



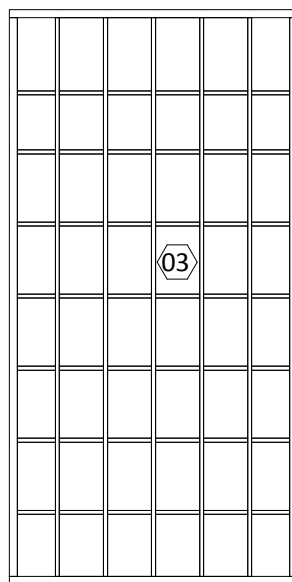




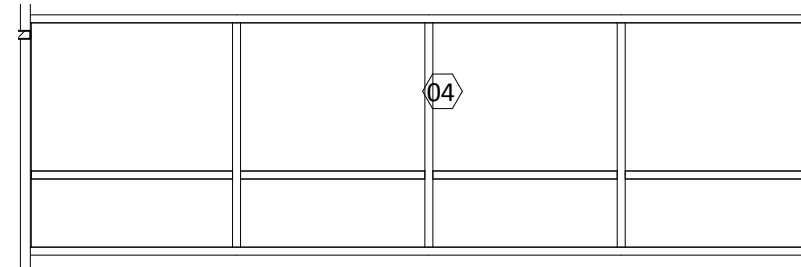
1 Window 01
PD-2/PD-8 1/4" = 1'-0"



2 Window 02
PD-2/PD-8 1/4" = 1'-0"



3 Window 03
PD-2/PD-8 1/4" = 1'-0"



4 Window 04
A-1.2/PD-8 1/4" = 1'-0"

EXISTING WINDOWS:

ADD NEW INTERIOR STORM WINDOWS
SCRAPE, PAINT, AND CAULK

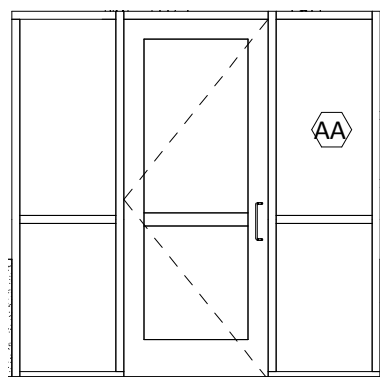
EXISTING WINDOW 04

EXISTING INTERIOR WINDOW: SCRAPE AND PAINT

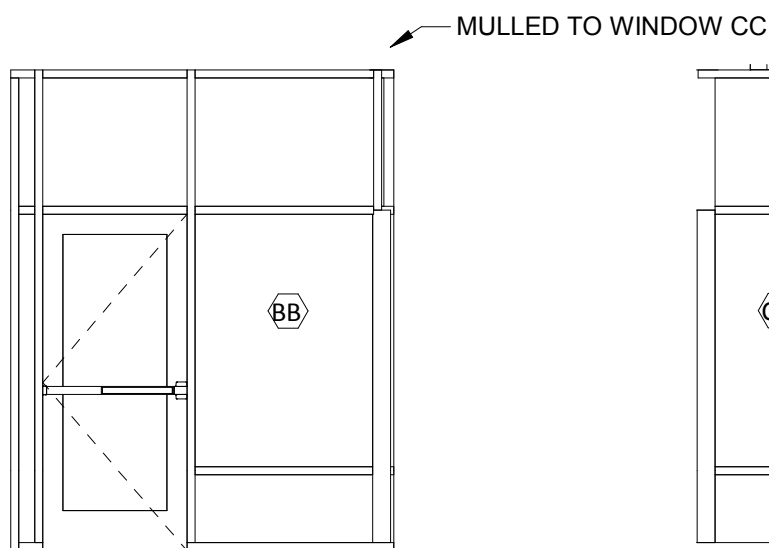
NEW WINDOWS:

INTERIOR AND EXTERIOR STOREFRONT

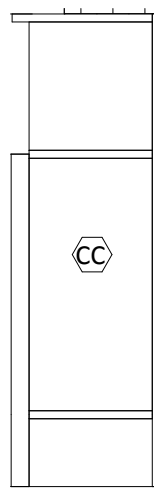
KAWNEER 451 UT TYP THERMALLY
BROKEN ALUMINUM STOREFRONT WITH
INSULATED GLASS



5 Window AA
PD-2/PD-8 1/4" = 1'-0"

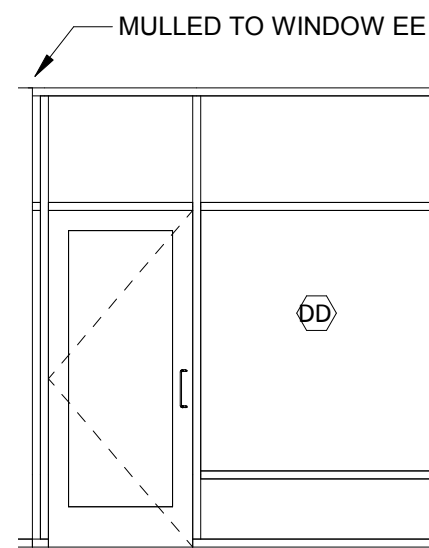


6 Window BB
A-1.2/PD-8 1/4" = 1'-0"

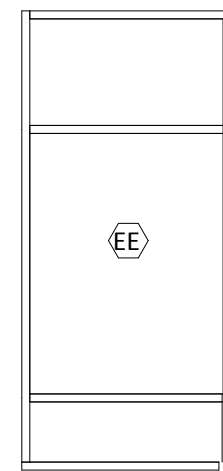


7 Window CC
A-1.2/PD-8 1/4" = 1'-0"

KAWNEER 400 NON THERMAL SINGLED
GLAZED ALUMINUM STOREFRONT



8 Window DD
A-1.2/PD-8 1/4" = 1'-0"



9 Window EE
A-1.2/PD-8 1/4" = 1'-0"

| DOOR SCHEDULE | | | | | | | | | | | | | | | |
|---------------|---------------------|---------------------|-------|---------|---------|-----------|-------|-----------|---------|--------|-----------|--------|--------|--------------|----------|
| NO. | FROM | TO | DOOR | | | | | | | FRAME | | | RATING | HARDWARE SET | Comments |
| | | | LEAFS | WIDTH | HEIGHT | THICKNESS | TYPE | MAT | GLAZING | MAT | TYPE | DEPTH | | | |
| 102 | GYMNASIUM | ENTRY | | 3' - 0" | 7' - 0" | 1 3/4" | AL-FG | AL | | AL | SEE ELEVS | | - | | |
| 104 | FITNESS | STORAGE | | 3' - 0" | 7' - 0" | 1 3/4" | FL | WD | | HM | A | 9" | - | | |
| 105 | | LOW STORAGE | | 3' - 0" | 7' - 6" | 1 3/4" | AL-FG | AL | | AL | SEE ELEVS | | - | | |
| 106 | | LOW STORAGE | | 0" | 0" | 1 3/4" | AL-FG | AL | | AL | SEE ELEVS | | - | | |
| 107 | | MULTI PURPOSE SPACE | | 3' - 0" | 7' - 0" | 0" | | | | | | | | | |
| 108 | MULTI PURPOSE SPACE | MULTI PURPOSE SPACE | | 3' - 0" | 7' - 0" | 1 3/4" | FL | MTL-INSUL | | HM-T B | A | 7" | - | | |
| 112 | GYMNASIUM | STORAGE | | 3' - 0" | 7' - 0" | 1 3/4" | FL | WD | | HM | A | 13" | - | | |
| 114 | FITNESS | GYMNASIUM | | 3' - 0" | 7' - 0" | 1 3/4" | FL | WD | | HM | B | 13" | - | | |
| 119 | STAIR | MECHANICAL | | 3' - 0" | 7' - 0" | 0" | | | | | | | | | |
| 120 | GYMNASIUM | | | 3' - 0" | 7' - 0" | 1 3/4" | DG | MTL-INSUL | | HM | A | 7" | - | | |
| 121 | GYMNASIUM | | | 3' - 0" | 7' - 0" | 1 3/4" | DG | MTL-INSUL | | HM | A | 7" | - | | |
| 123 | GYMNASIUM | | | 3' - 0" | 7' - 0" | 1 3/4" | FL | MTL-INSUL | | HM-T B | B | 7 1/4" | - | | |
| 124 | MULTI PURPOSE SPACE | | | 3' - 0" | 7' - 0" | 1 3/4" | FL | MTL-INSUL | | HM-T B | A | 7" | - | | |
| 125 | LOW STORAGE | MULTI PURPOSE SPACE | | 3' - 0" | 7' - 0" | 0" | | | | | | | | | |
| 126 | MULTI PURPOSE SPACE | STAIR | | 3' - 0" | 7' - 0" | 1 3/4" | FL | MTL-INSUL | | HM-T B | A | 7" | - | | |
| 127 | GYMNASIUM | WOMEN | | 3' - 0" | 7' - 0" | 1 3/4" | FL | WD | | HM | A | 13" | - | | |
| 128 | GYMNASIUM | MEN | | 3' - 0" | 7' - 0" | 1 3/4" | FL | WD | | HM | A | 13" | - | | |
| 129 | MEN | MEN | | 3' - 0" | 7' - 0" | 0" | | | | | | | | | |
| 130 | WOMEN | WOMEN | | 3' - 0" | 7' - 0" | 0" | | | | | | | | | |
| 131 | GYMNASIUM | FAMILY | | 3' - 0" | 7' - 0" | 1 3/4" | FL | WD | | HM | A | 13" | - | | |
| 132 | OFFICE | MULTI PURPOSE | | 3' - 0" | 7' - 0" | 1 3/4" | AL-FG | AL | | AL | SEE ELEVS | | - | | |
| 133 | CLOSET | CLOSET | | 3' - 0" | 7' - 0" | 1 3/4" | FL | WD | | HM | A | 8 1/4" | - | | |
| 134 | CLOSET | CLOSET | | 3' - 0" | 7' - 0" | 1 3/4" | FL | WD | | HM | A | 8 1/4" | - | | |
| 135 | LULA | LOW STORAGE | | 3' - 0" | 7' - 0" | 0" | | | | | | | | | |
| 136 | LULA | MULTI PURPOSE | | 3' - 0" | 7' - 0" | 0" | | | | | | | | | |

| FINISH SCHEDULE | | | | | | | | | | |
|-----------------|---------------------|---------|------------------------|----------|------------|------------|-----------|-----------|---------|----------|
| NUM. | ROOM | Area | FLOOR | BASE | WALLS | | | | CEILING | COMMENTS |
| | | | | | NORTH WALL | SOUTH WALL | EAST WALL | WEST WALL | | |
| 001 | MECHANICAL | 190 SF | Concrete | | PTD GWB | PTD GWB | PTD GWB | PTD GWB | Exposed | |
| 002 | MULTI PURPOSE SPACE | 790 SF | Flotex | 4" Vinyl | PTD GWB | PTD GWB | PTD GWB | PTD GWB | TYPE 2 | |
| 003 | LOW STORAGE | 177 SF | Flotex | 4" Vinyl | PTD GWB | PTD GWB | PTD GWB | PTD GWB | TYPE 3 | |
| 101 | GYMNASIUM | 3980 SF | Wood Competition Floor | 4" Vinyl | PTD BLOCK | PTD BLOCK | PTD BLOCK | PTD BLOCK | TYPE 3 | |
| 102 | STORAGE | 190 SF | Concrete | 4" Vinyl | PTD CONC. | PTD CONC. | PTD CONC | PTD CONC | TYPE 3 | |
| 103 | FITNESS | 437 SF | 3/8" Rubber Tile | 4" Vinyl | PTD GWB | PTD GWB | PTD GWB | PTD GWB | TYPE 1 | |
| 104 | MEN | 200 SF | Burnished Concrete | 4" Vinyl | PTD GWB | PTD GWB | PTD GWB | PTD GWB | TYPE 1 | |
| 105 | WOMEN | 191 SF | Burnished Concrete | 4" Vinyl | PTD GWB | PTD GWB | PTD GWB | PTD GWB | TYPE 1 | |
| 106 | FAMILY | 57 SF | Burnished Concrete | 4" Vinyl | PTD GWB | PTD GWB | PTD GWB | PTD GWB | TYPE 1 | |
| 107 | STORAGE | 142 SF | Concrete | 4" Vinyl | PTD GWB | PTD GWB | PTD GWB | PTD GWB | TYPE 1 | |
| 107 | ENTRY | 260 SF | Walk Off Mat | 4" Vinyl | PTD GWB | PTD GWB | PTD GWB | PTD GWB | TYPE 1 | |
| 113 | STAIR | 47 SF | Rubber | | PTD GWB | PTD GWB | PTD GWB | PTD GWB | TYPE 1 | |
| 114 | STAIR | 49 SF | Rubber | | PTD GWB | PTD GWB | PTD GWB | PTD GWB | TYPE 1 | |
| 124 | LULA | 43 SF | Rubber | | | | | | | |
| 201 | MULTI PURPOSE | 855 SF | Marmoleum | 4" Vinyl | PTD GWB | PTD GWB | PTD GWB | PTD GWB | TYPE 1 | |
| 202 | OFFICE | 232 SF | Flotex | 4" Vinyl | PTD GWB | PTD GWB | PTD GWB | PTD GWB | TYPE 1 | |
| 203 | CLOSET | 35 SF | Flotex | 4" Vinyl | PTD GWB | PTD GWB | PTD GWB | PTD GWB | TYPE 1 | |
| 204 | CLOSET | 31 SF | Flotex | 4" Vinyl | PTD GWB | PTD GWB | PTD GWB | PTD GWB | TYPE 1 | |